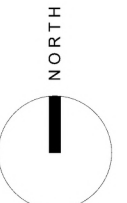
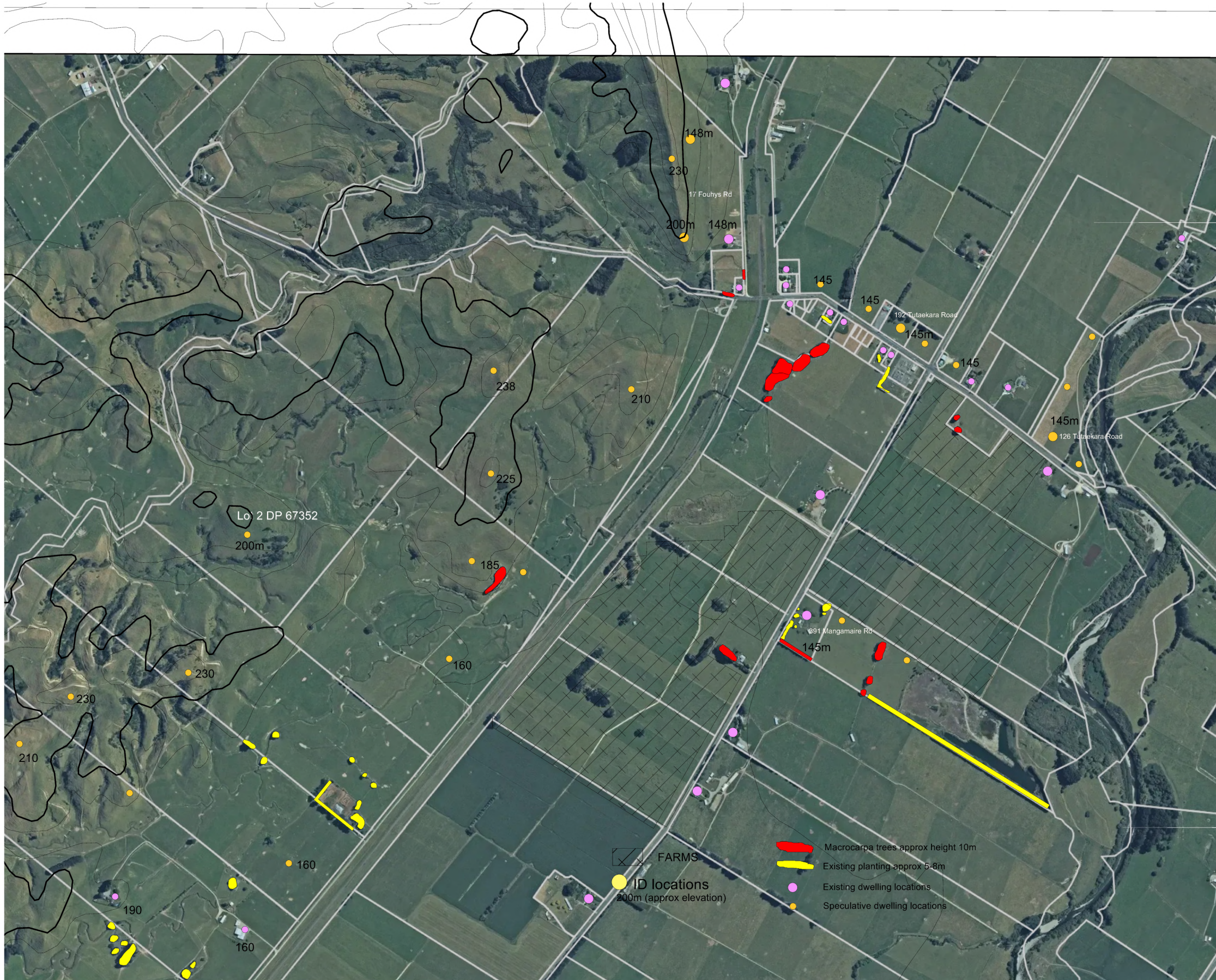


REV	DATE	NOTES
1	16/06/2023	RFI Glint and Glare
2	4/08/2023	ADDITIONAL GLINT AND GLARE



RMM
 CHRISTCHURCH +64 3 366 3288
 WĀNAKA +64 3 974 7940
 AUCKLAND +64 21 244 8630
 DUNEDIN +64 27 498 8795
 NELSON +64 27 250 0500
 rmmmla.co.nz info@rmmmla.co.nz

**RFI - GLINT AND GLARE
 SOLAR FARM PAHIATUA**

Mangamaire Road, Mangamaire

JOB No.	22026
SCALE	1:10000
DATE	4/08/2023
DESIGNED	RL
DRAWN	RL
CHECKED	CHECKED BY
STATUS	DRAFT
DRAWING No.	REVISION

L 1.0
 SERIES