

From: [Allie Dunn](#)
To: [REDACTED]
Subject: CM: Response to official information request re Herbertville Beach Signage
Date: Tuesday, 27 January 2026 1:47:00 pm
Attachments: [image003.png](#)
[image004.png](#)
[image005.png](#)
[image006.png](#)
[image007.png](#)
[image008.png](#)
[image009.png](#)

Kia ora

Thank you for your email to Mayor Gilmore dated 26 January 2026. You requested copies of any Council-held documentation relating to:

- The speed limit on Herbertville Beach, including when it was established and under what authority
- Confirmation of whether the sand dunes at Cape Turnagain fall within the Tautane Station boundary and are privately owned
- The legal authority for any requirement that dogs be on a leash in that area

We appreciate the opportunity to provide clarity on these matters. The information available to Council is outlined below.

Public Places Bylaw 2024

I have not been able to find any information held in our records about the speed limit on Herbertville Beach, however there are restrictions placed on vehicles being driven on the beach or sanddunes through our Public Places Bylaw 2024.

The Public Places Bylaw 2024 was developed through an extensive process that included community engagement, public consultation, and hearings. Community members who provided submissions on the draft bylaw were invited to speak directly to Council, and their feedback contributed to amendments before the bylaw came into force on 30 September 2024.

Section 6 of the bylaw sets out prohibited activities. These include operating or driving a vehicle on a beach, sand dune, or wetland area, and accessing a beach using any route other than a designated access point where one exists.

Council meeting minutes from 28 August 2024 note that, in relation to clause 6.1(k), vehicles must be able to access a beach for the purpose of launching boats. The minutes also record that Herbertville Beach does not have a designated access route.

Council meeting documents, including agendas, reports and minutes, are publicly available on our website at: <https://www.tararua.govt.nz/publications/agendas-and-minutes>

Dog Control Bylaw 2022

The Council's Dog Control Bylaw outlines the responsibilities of dog owners in public

places. Section 6 requires owners to keep their dogs under continuous control at all times and to ensure that dogs do not enter any prohibited areas.

Under the Dog Control Act 1996, Councils have the authority to make bylaws requiring dogs to be leashed in specified public places.

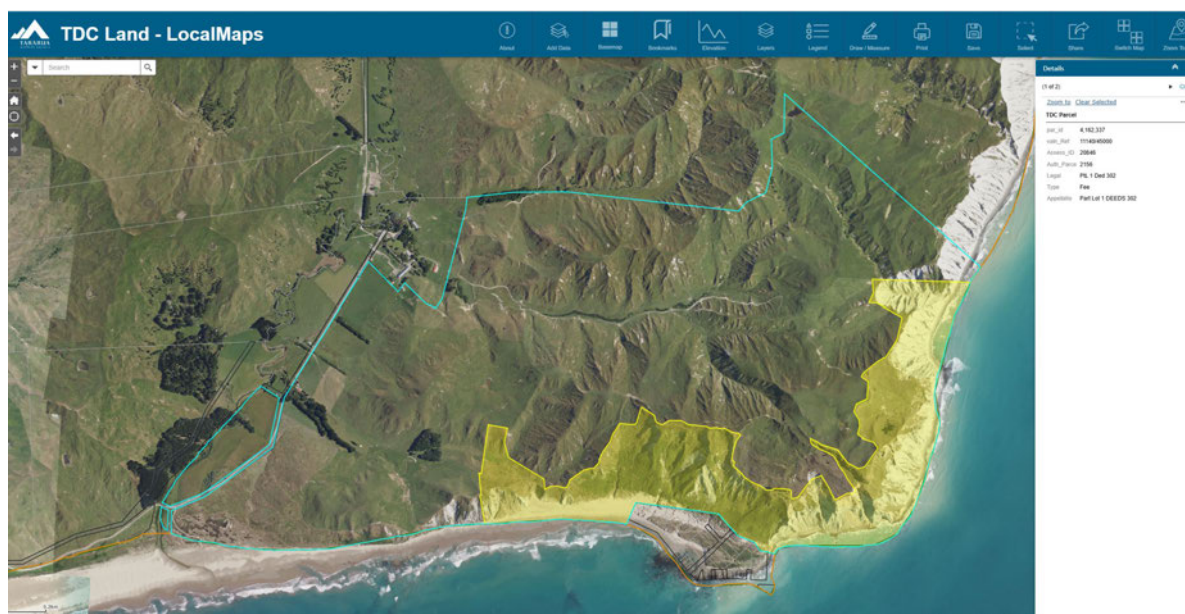
It is also important to note that other agencies—such as Regional Councils and the Department of Conservation—may impose their own dog control requirements under the Reserves Act 1977 and the Conservation Act 1987.

Council bylaws are publicly available on our website at:

<https://www.tararuaadc.govt.nz/publications/bylaws-and-policies>

Ownership of Sand Dunes at Cape Turnagain

Below is an image showing the land parcel information for Tautane Station at Cape Turnagain. The yellow shading identifies the QEII covenanted area.



If you are not satisfied with our response to your request for information, you have the right to seek an investigation and review by the Ombudsman. Information about how to make a complaint is available at www.ombudsman.parliament.nz or freephone 0800 802 602.

Ngā mihi



Allie Dunn | Manager Democracy Services | Deputy Electoral Officer

Democracy Services | Taranui District Council

Phone: +64 6 3744080 | Mobile: +64 27 3331626

Allie.Dunn@Taranuadc.govt.nz