



Welcome

Tararua Funding Information Evening

13 May 2021



Mark Maxwell
Tararua District Council

Group Manager – Economic and
Community Development



Community Development

Community-Led Development

Support with regulatory matters

Support with funding

Community Development

Community Boards and Committees

Generosity.org

Community Foundation





Eastern & Central Community Trust

Providing grants and support to community organisations in the Gisborne Tairāwhiti, Hawke's Bay, Tararua, Wairarapa, Manawatu & Horowhenua regions

Who we are



In existence for 33
years



12 Trustees appointed
by Minister of Finance



6 staff based in
Hastings



\$6.2M total grants in
2019/20

Who we are

- Formed through the sale of Trustbank to Westpac
- Current investments of \$212 million
- Interest and Dividends used to:
 - Pay the bills
 - Make grants to our communities
 - Put aside funds for future generations

Grassroots Fund

- No closing dates
- Small grants for operating expenses, festivals, event costs, sports equipment, small assets like vehicle purchases etc.
- Asset refurbishment – new roof, building alterations, new kitchens etc.
- Grants over \$10k go to Board meetings, six per year
- Education Grants – Twice a year

What we do...

Community Assets and Facilities Fund (CAFF)

- For capital projects over \$300k
- Maximum grant of \$250k
- Two step process:
 1. Expression of Interest
 2. Capital Works Application
- Applications twice a year – March and September

What we do...

Strategic Fund

- Being developed
- Funding for proven initiatives that deliver outcomes in ECCT's Strategic Focus areas
- Based on a Partnership agreement
- Invitational fund

What we do...

Rangatahi Project

- Co-design of a funding strategy for children and youth
- Pilot project launched
- \$50k for youth-led projects
- Decisions made by youth
- Watch this space.....



<https://youtube/RtOxyiwGts>



Eastern & Central Community Trust

Neil Attapattu
Community Advisor
neil@ecct.org.nz
0800 878 720

Eastern & Central
COMMUNITY TRUST



FUNDamentals

Internal Affairs

13 May 2021



Te Tari Takekōwhiri

New Zealand Government



Who we are...

Based in Palmerston North cover from Taumarunui to south of Levin, Whanganui over to the Tararua.

How we can help...

Our community advisors can help in various ways, including providing information and advice about:

- Community –led development
- Community projects
- Developing and strengthening community groups and organisation
- Accessing grants
- Understanding and working toward achieving meaningful outcomes for communities

Upcoming Funding Opportunities

COGS

The Community Organisation Grants Scheme or COGS provides grants to non-profit organisations delivering community-based social services that contribute to achieving locally-determined outcomes.

Lottery

Lottery Community grants are available for not-for-profit organisations with a community or social service focus for ongoing operating costs or projects which help improve the quality of people's lives in their communities.





Thank you.....

**“Alone, we can do so little:
together, we can do so much”**

Palmerston North office - 06 355 8088

0800 824 824 – Funding enquiries

www.communitymatters.govt.nz

www.dia.govt.nz



Tū Manawa Active Aotearoa



What is Tū Manawa?



- **Tū Manawa Active Aotearoa is a \$68m activation fund over four years to provide quality opportunities and experiences in play, active recreation and sport for tamariki and rangatahi.**
- It is ...
 - A new Sport NZ fund
 - Informed by the findings of the Kiwisport Review 2019 and shaped by Sport NZ Strategic Priorities 2020-21
 - Managed and distributed locally by Regional Sports Trusts, who Sport NZ are working in partnership with to enable community organisations to provide local programmes and projects
 - Available for new or existing programmes/projects, and funding will be provided for up to 12 months

Who is it for?



Tū Manawa Active Aotearoa has been established to support tamariki and rangatahi take part in play, active recreation and sport activities that meet their needs and overcome barriers they face.

In addition, for year one, the fund will prioritise groups who we know from research are more at risk of missing out or being less active:

- Children and young people in higher deprivation communities (5-18)
- Girls and young women (5-24)
- Disabled children and young people (5-18)

These priority groups will be reviewed before 30 June 2021.

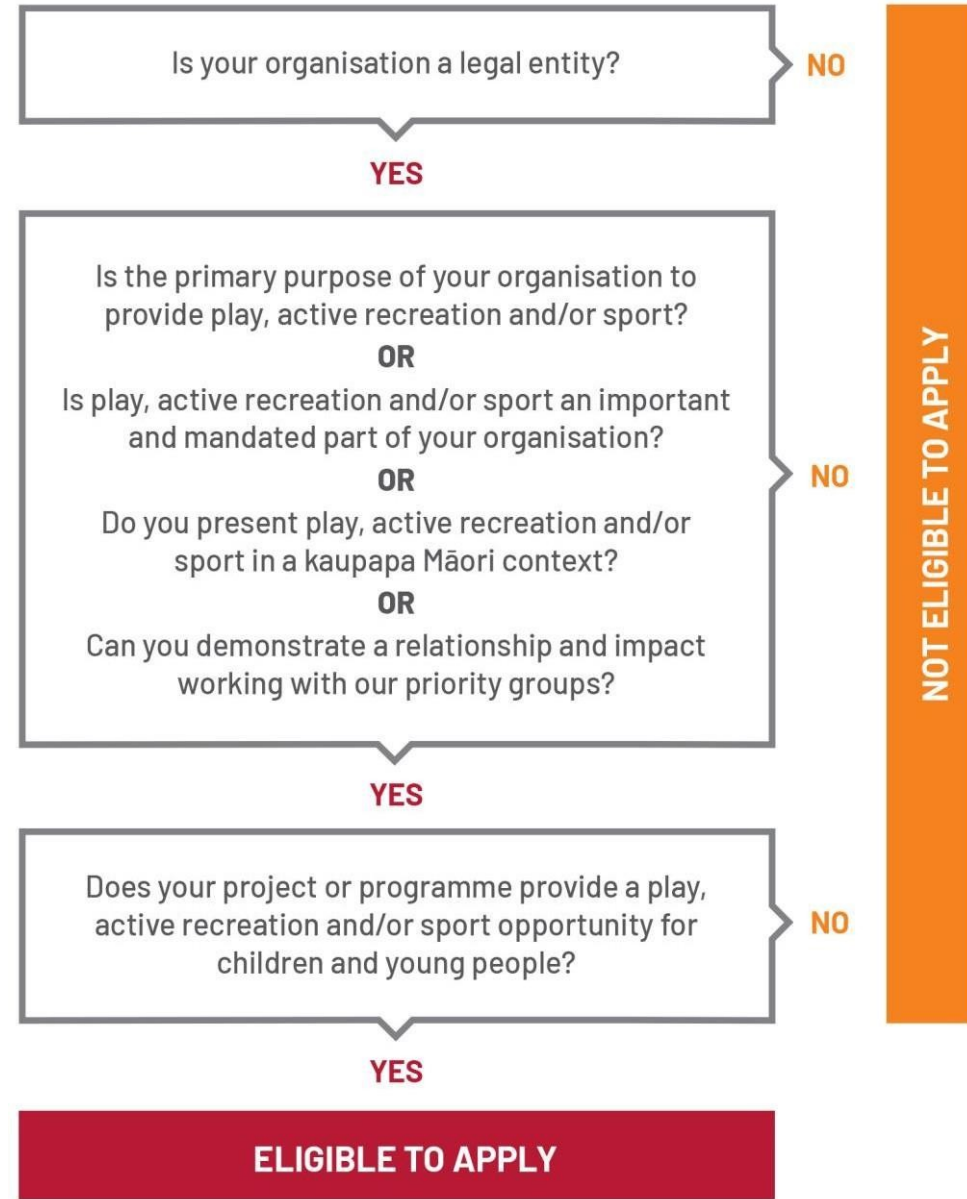
What's different from Kiwisport?



- Broadened focus to include play and active recreation, as well as 'organised sport'
- Tighter purpose around provision of quality opportunities and experiences (local activation)
- New objectives that align more with Sport NZ's Three Approaches (insights, physical literacy and locally led)
- More evenly distributed between tamariki and rangatahi
- Each programme/project to meet a clearly identified need
- More \$\$ (\$16m per annum v \$8.5m) with a weighted regional distribution model
- A stronger focus on innovative ways to activate tamariki and rangatahi
- Distinct application and assessment process for Kaupapa Māori organisations
- Greater emphasis on monitoring & evaluation, especially re qualitative storytelling

Who can apply?

Funding is available to a wide range of groups and organisations who are planning to, or already deliver, a play, active recreation or sport programme/project to help children and young people get active.



A wide range of groups and organisations who deliver programmes to children and young people can apply, as long as they have legal status, including:

- Hapū, Iwi, Marae, Māori organisations
- Incorporated Societies e.g. clubs
- Charitable Trusts
- Regional or Local Councils
- For-profit businesses/commercial organisations and social enterprises
- Education settings:
 - Primary/intermediate schools/kura
 - Secondary schools/wharekura
 - Tertiary education/whare wānanga

What can be funded?

Programmes or projects based on identified needs

- Programme or project delivery (e.g. venue or equipment hire, transport to event)
- Equipment (as part of a programme or project)
- Officials (where these are required for the delivery)
- Delivery staff wages (e.g. activity leader, coordinator)
- New or existing projects
- Innovative and creative projects!



What can't be funded?



- Costs of retrospective programmes or events (those that have already been completed or held)
- Multi-year programmes
- Costs associated with professional athletes, professional sports teams, academies, or representative teams
- Capital costs (e.g. facility development, playgrounds)
- Administration and on-going costs (e.g. rent, internet, power)
- Wages or annual salaries for staff who are not involved in the planning or delivery of the project or programme
- Medals, prizes, giveaways, and spot prizes
- Applications from organisations who already receive Sport NZ Partnership Investment – except in exceptional circumstances

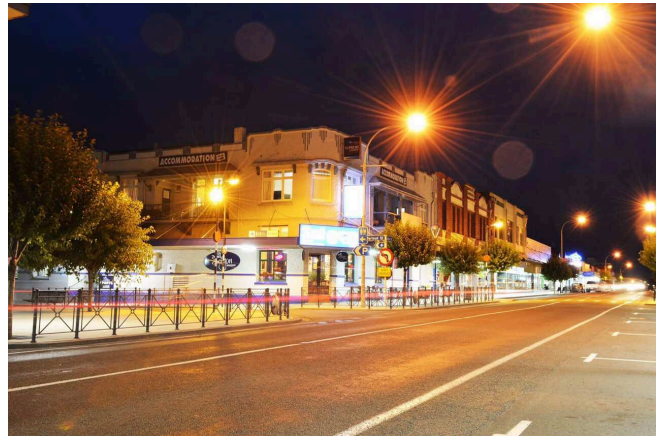
Key Application Tips

1. Demand Led

- What need in the community is it meeting?
- Who have you spoken to to design the programme?
- Please don't tell us YOU want more participants.

2. It is not Kiwi Sport

- It has different criteria and requirements
- Please read the community guidelines to understand the purpose in more detail.



the
Southern
trust



Who are we?

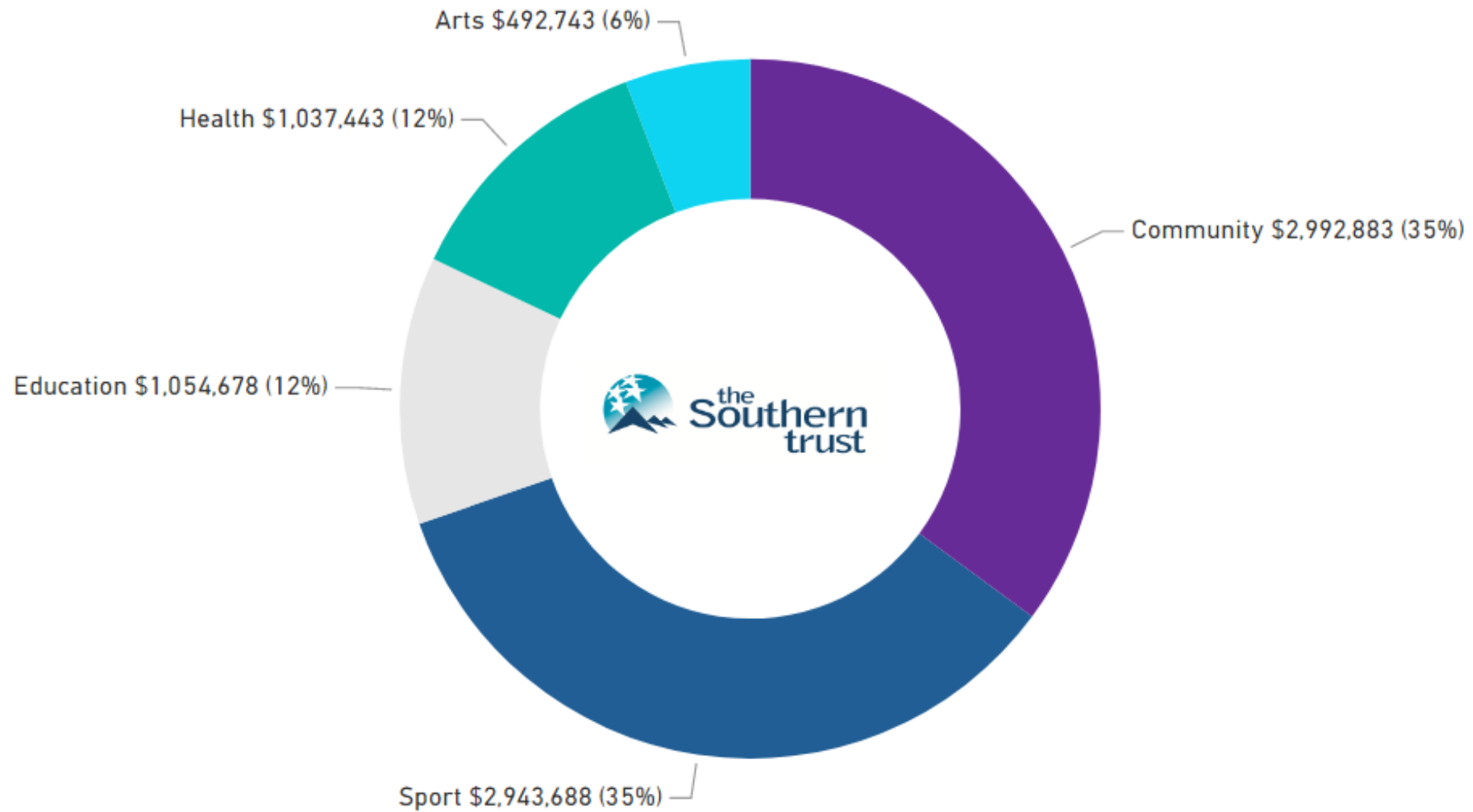
- The Southern Trust is a society that is licensed to operate gaming machines at venues throughout New Zealand
- The Trust has held a license since 1998
- We currently operate 550 machines in 47 venues



Background

- In 2020 the Trust returned over \$8.5million to not for profit organisations across New Zealand – amidst a COVID-19 crisis
- Grants made covered the spectrum of amateur sport, education, community and welfare, the arts and health

\$8,521,435 was distributed for the year ending December 27, 2020





How does Class 4 Gambling Work?

- Class 4 gambling refers to the operation of gaming machines in hotels and bars throughout the country
- Gaming machines may only be operated as a means of raising funds for distribution to not for profit groups



Funding

- The Southern Trust policy is to return at least 95% of the funds raised into the local authority area in which it was generated
- The other 5% goes to organisations that are representative of all of New Zealand or projects that have national significance



Who Can Apply for Funds?

- Organisations must be not for profit.
- Sporting organisations need to be affiliated to a Sport NZ recognised National Body (Southern Trust policy) and be active only in the area of amateur sport
- You can be part of a school based sports group



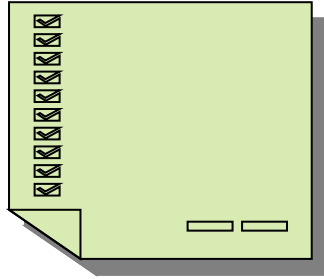
Examples of common things we fund are:

- Sports: Playing uniforms, coaching, equipment & travel costs for bona fide tournaments.
- Arts & Culture: Cultural uniforms, facilities & equipment.
- Education: Travel costs for school camps & sports teams, educational equipment & resources, playgrounds, sports uniforms and equipment



Examples of areas NOT funded are:

- Retrospective applications will not be considered
- Professional sports team and/or players
- Fees, entry or affiliation
- Donations to nonaffiliated social sports clubs
- Donations to individuals
- Purchase of food
- Administration costs for Sport, Arts or Educational organisations.



How do you apply?

- We only accept applications through our online Grants Management System, accessed from our website www.tst.org.nz
- Complete the application fully
- Once completed to your satisfaction, submit the application
- Any queries – call on 0800-424-274



What happens next?

- If your application meets the criteria, the application will be processed and considered within four weeks
- Funds will be direct credited into the nominated bank account
- How you spend the funds will be audited by the society



Where to from here?

- Register on our online system and complete the application
- Contact Nicola at the Trust to discuss timing and workload, she will give you an indication of when the best time to apply will be
- The grants team will also answer any questions and help you through the process



Tararua

- There is currently about \$300,000 available to be distributed in this area
- The funds are available not only for Dannevirke, but for the wider District.

Contact Us

- 0800 424274 (Extn 715 for Nicola)
- info@southerntrust.org.nz
- www.southerntrust.org.nz
- Steve Bennett 034716294 / 0210514978
- Karen Shea 034716601 / 021948018
- Facebook The Southern Trust
- 98 Glasgow Street, South Dunedin 9012
- PO Box , Dunedin



the
Southern
trust



Conclusion

- We want to make sure that we are responding appropriately to the needs of your community and welcome discussions with you to help us make the best funding decisions possible

Agriculture & Investment Services

Tapuwae Ahuwhenua

MPI – Agriculture & Investment Services

Fiona Clark – Regional Economic Development

Mark Rutene – Maori Agri-business

Celia Newton – Rural Communities & Farming Support

Genevieve Bennett – Investment Programmes

Ministry for Primary Industries
Manatū Ahu Matua



SFF Futures

Do you have an initiative that could make a difference to New Zealand's food and fibre sectors?

- the development of a new product or service, or a better way of doing something
- feasibility studies, such as exploring the development of a solution to an industry issue, or the viability of a new product
- applied research which has a practical application and addresses a real issue in the industry or helps pursue an opportunity.

Increasing the Value of Māori Land

The Māori Agribusiness Pathway to Increased Productivity (MAPIP) Programme: MAPIP focuses on helping realise tangible on-the-ground projects identified by a Māori landowners or agribusinesses.

The Māori Agribusiness Extension (MABx) Programme: MABx focuses on providing shared, group learning opportunities, exploring options for sustainable system changes.

To begin the process of accessing support, you need:

- Māori land in collective ownership
- owners and trustees driving the work
- a transparent process for making decisions with the group
- a long-term, sustainable primary sector focus.



Rural Community Hubs

Rural Community Hubs help strengthen the resilience, connectedness and wellbeing of communities. The programme assists rural communities to:

- support their ability to adjust and respond positively to change;
- enhance social connections (build community cohesion);
- facilitate the pathway to employment (adult education, such as computer literacy training and driver education programmes);
- support improved access to government funded services (health, welfare assistance, other funding paths);
- build social and community support networks to enable them to take control and tackle challenges they face.





CENTRAL ENERGY TRUST

GRANTS AND FUNDING

CENTRAL ENERGY TRUST

GRANTS AND FUNDING

The Trust has five Trustees who are appointed by an independent appointment panel after public advertisements have requested expressions of interest from the public.

These Trustees are responsible for managing the \$68 million investment portfolio and distributing the income to consumer beneficiaries.

The current Trustees are Peter Askey (Chairperson), Ruma Karaitiana (Deputy Chairperson), Rodney Wong, Margaret Kouvelis and Murray Georgel.



CENTRAL ENERGY TRUST

GRANTS AND FUNDING

Major Community Projects

Energy Component of new or refurbished community facilities

Energy Efficiency Projects

Energy Appliances

Event Funding

Other Energy Related



CENTRAL ENERGY TRUST

GRANTS AND FUNDING

HOW TO APPLY

We have two grant rounds per year that close 1 May and 1 November.

To download an application form or complete online please visit our website:

[www.centralenergytrust.org.](http://www.centralenergytrust.org.nz)

nz

CENTRAL ENERGY TRUST

GRANTS AND FUNDING

2020 GRANTS AT A GLANCE

SUCCESSFUL GRANT APPLICATIONS

77%

VALUE OF GRANTS AWARDED

\$2,514,395

TOTAL NUMBER OF GRANT
APPLICATIONS RECEIVED

114

AVERAGE VALUE OF GRANTS
AWARDED

\$28,698

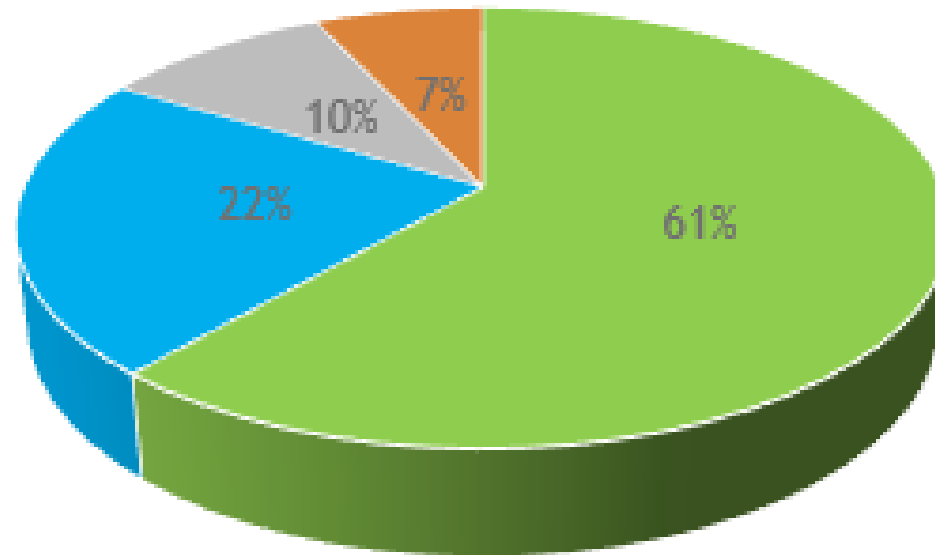
Individual grant applications range from

\$1,179 - \$250,000

CENTRAL ENERGY TRUST

GRANTS AND FUNDING

PERCENTAGE OF FUNDING AWARDED BY CATEGORY - 2020



- Community Facilities
- Sport
- Arts and Culture
- Community Wellbeing

CENTRAL ENERGY TRUST

GRANTS AND FUNDING

PLEASE DO NOT HESITATE TO CONTACT US BEFORE
TAKING THE TIME TO COMPLETE AN APPLICATION FORM.



WE ARE HERE TO HELP!

(06) 358 4163



WAIREKA COMMUNITY TRUST

GRANTS AND FUNDING

Waireka Community Trust seeks to make a positive impact on the communities of Pahiatua, Eketahuna and Woodville by making charitable distributions in the area.

WAIREKA COMMUNITY TRUST

GRANTS AND FUNDING

The Trust currently have six Trustees responsible for managing the Trust Fund:

Tracey Collis

Tim Hewitt

Tally Jackson

Max Mayer

Andrea Platt

Andrew Poulton

WAIREKA COMMUNITY TRUST

GRANTS AND FUNDING

The Trust funds invested have been successfully managed by Craigs Investment Partners since 2008.

*For the 2020 year the Trust had a return on investments of **\$347,806** (2019: \$477,361). This represents a return of **7.8%**.*

WAIREKA COMMUNITY TRUST

GRANTS AND FUNDING

*Waireka Community Trust have **two** grant rounds per year, February and August.*

*The objectives set out in the Trust Deed are **broad** to allow the Trustees to consider a wide range of charitable distributions.*

WAIREKA COMMUNITY TRUST

GRANTS AND FUNDING

*During the twelve months to 30 June 2020 the Trust made a total of **11** grants totaling **\$53,554**.*

*Total Grants awarded since inception total **\$1,003,729**.*

WAIREKA COMMUNITY TRUST

GRANTS AND FUNDING

The Bush Multisport Trust have received funding from Waireka Community Trust in excess of \$150,000.

WAIREKA COMMUNITY TRUST

GRANTS AND FUNDING

How to apply?

*Please contact our office on **(06) 358 4163**
or manawatu@bdo.co.nz for an
application form or any enquiries.*

WAIREKA COMMUNITY TRUST

GRANTS AND FUNDING

The title "Creative Communities Scheme" is written in a large, white, bold, sans-serif font, centered on a green diagonal background that cuts across the bottom of the image.

Creative Communities Scheme

What is CCS?

- Creative New Zealand funding delivered in partnership with local councils
- Funds local arts projects
- Open to individuals and groups
- Local decision making process
- Average grant under \$2000

Project must support one of the following

- Access and participation – create opportunities for local communities to engage with and participate in local arts activities
- Diversity – support the diverse artistic cultural traditions of local communities
- Young people – enable young people (up to 18 years) to engage with and participate in the arts

Project must also

- Take place within the city or district where the application is made
- Be completed within 12 months of funding being approved
- Not have started or finished before CCS funding is approved
- Not have already been funded through Creative New Zealand's other arts funding programmes

What can I get funding for?

- Materials for arts activities or programmes
- Venue or equipment hire
- Personnel and administrative costs for short-term projects including artist fees and project management
- Promotion and publicity of arts activities



What *projects* can't be funded

- Fundraising activities
- Capital projects e.g. developing galleries, marae, theatres or other venues or facilities
- Local council projects
- Projects which are mainly focused around other areas e.g. health, education or the environment and that only have a very small arts component
- Arts projects in schools or other education institutions that are part of the core business of that institution (e.g. in the curriculum and teaching plan)

What *costs* cant be funded?

- On-going administration or personnel costs that are not related to the specific project
- Costs for projects already started or completed
- Travel costs to attend performances or exhibitions in other areas
- Food or refreshment costs
- Buying equipment, such as computers, cameras, musical instruments, costumes, lights or uniforms

What costs can't be funded? (cont)

- Entry fees for competitions, contests and exams
- Prize money, awards and judges' fees for competitions
- Royalties
- Buying artworks for collections
- Debt or interest on debt

Q & As



Thanks for
coming!
